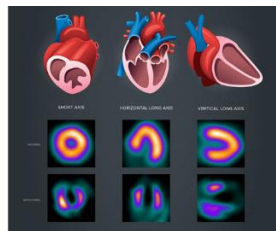
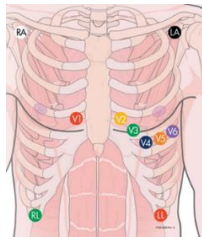




MORRIS HOSPITAL
CARDIAC DIAGNOSTICS
815-705-1170

DOBUTAMINE CARDIOLYTE STRESS

Prior to testing, the nurse will listen to your heart and lungs. The staff will clean your skin with alcohol and exfoliate it using a mildly abrasive tape. If you have chest hair, we may need to shave your chest prior to preparing your skin. We will place stickers across your chest and abdomen. Wires will attach to those stickers, which allow us to monitor your heart throughout your test. We will also monitor your blood pressure throughout testing. We will also start a small IV so you can receive the medicine to stress your heart and the nuclear tracer. The nuclear tracer is what allows us to take images of your heart. Dobutamine is the medication we will use to stress the heart. This medicine will make your heart beat faster and harder like it does during exercise. We are trying to bring your heart rate up to a certain range that is based on your age. We will discuss your specific goals before your test. The nurse will review the effects of the medicine prior to testing.



We start out with a small dose of medication, and every 3 minutes, we increase the dose until we reach your heart rate goal. Once we hit your heart rate goal, you will receive an injection of the nuclear tracer, *Cardiolite*. You will be monitored for at least 6 minutes in what we call the recovery period. After you have completed your recovery period, we will remove our monitoring equipment and review post testing instructions. Usually your IV will come out, but this may remain in place until you are done with all of your testing for the day.

Cardiolite stress testing usually involves two injections of the nuclear tracer and two scans. You receive an injection when your heart is at rest, and then a scan about an hour later. Then you will receive an injection of the nuclear tracer during the stress test, and your scan will be about 30-60 minutes later. Sometimes both scans are performed in one day and you should expect to be at the hospital for about 3 hours. Sometimes you will come on 2 separate days; one for rest and one for stress. You should expect to be at the hospital for about 90 minutes each day. Your ordering provider's office will contact you with your results in about 5 business days.