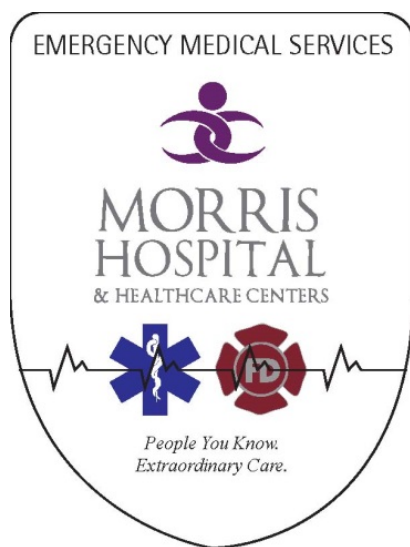


MORRIS HOSPITAL & HEALTHCARE CENTERS  
IN PARTNERSHIP WITH JOLIET JUNIOR COLLEGE

# Paramedic Education Program Handbook

---



**Handbook Version 1.9**

**Revised- 10/29/2018**

**Effective Date- 8/1/2015**

## **Paramedic Program Staff**

**Dr. Sean Atchison, Medical Director**

Phone#: 815-705-7180

**Robin Stortz, EMS Manager, Program Director**

Phone # 815-705-7189

[rstortz@morrishospital.org](mailto:rstortz@morrishospital.org)

**Ed Ludwig, EMS Education Coordinator / Lead Instructor**

Phone#: 815-705-7180

Cell#: 815-919-3321

[eludwig@morrishospital.org](mailto:eludwig@morrishospital.org)

**Charlotte Garrabrant, JJC EMS Professor / Coordinator**

Phone# 815-580-2356

[cclark@jjc.edu](mailto:cclark@jjc.edu)

**Stephanie Ressler, EMS Educator**

Phone# 815-705-7891

Cell# 815-757-2005

[sressler@morrishospital.org](mailto:sressler@morrishospital.org)

**Mike Callahan, EMS System Coordinator**

Phone# 815-705-7188

[mcallahan@morrishospital.org](mailto:mcallahan@morrishospital.org)

**Stephanie Brewer, EMS Operations Specialist**

Phone# 815-705-7179

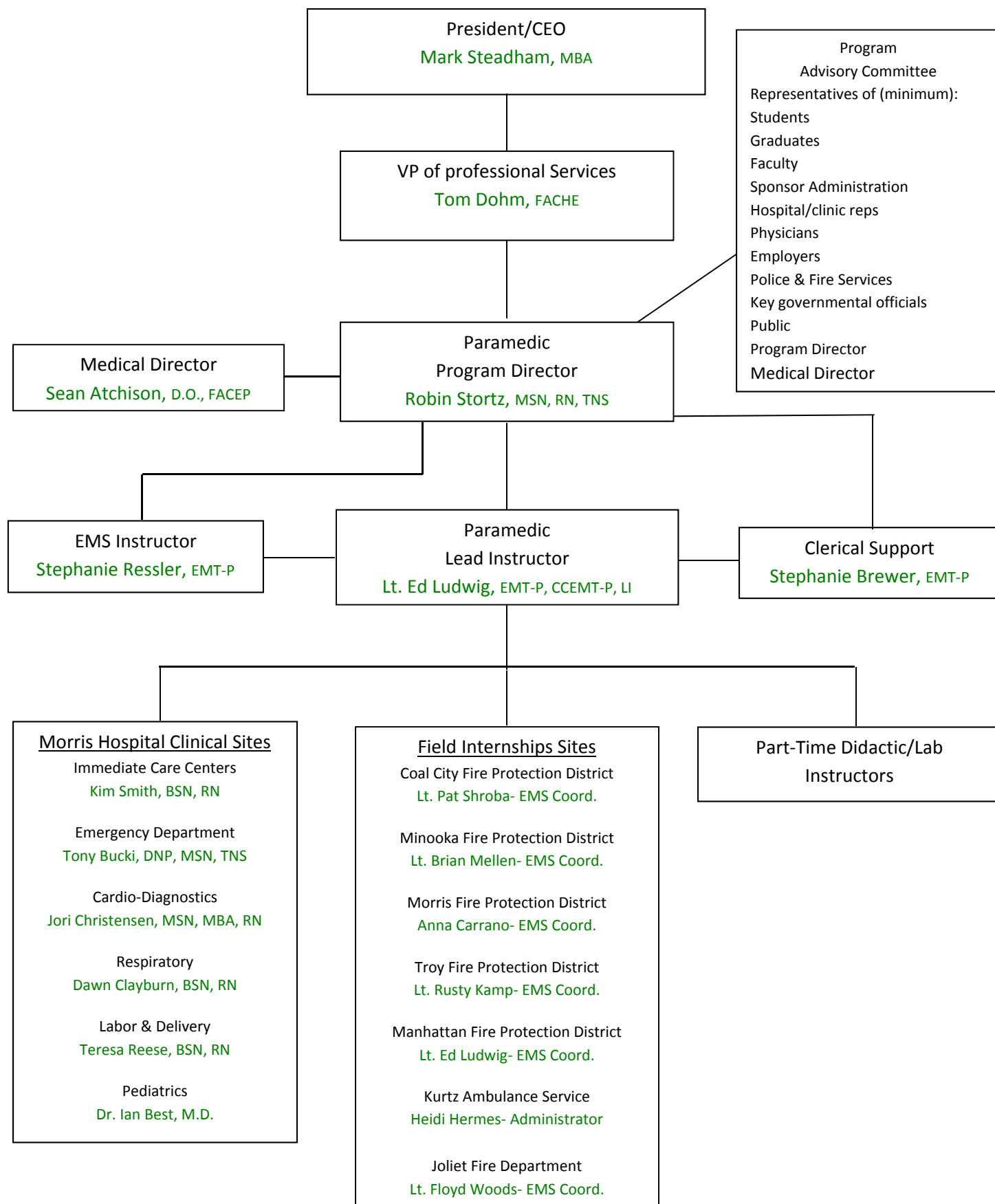
[sbrewer@morrishospital.org](mailto:sbrewer@morrishospital.org)

## Table of Contents

<b>Program Overview</b>	<b>Section 1</b>
<b>Accreditation</b>	<b>Section 2</b>
<b>Program Mission Statement</b>	<b>Section 3</b>
<b>Program Goal</b>	<b>Section 4</b>
<b>Program Objectives</b>	<b>Section 5</b>
<b>Discrimination Policy</b>	<b>Section 6</b>
<b>Malpractice/Medical Insurance</b>	<b>Section 7</b>
<b>Physical, TB Test, Drug Test, Immunizations &amp; Background Check</b>	<b>Section 8</b>
<b>School Closings</b>	<b>Section 9</b>
<b>Holidays</b>	<b>Section 10</b>
<b>Attendance</b>	<b>Section 11</b>
<b>Voluntary Withdrawal</b>	<b>Section 12</b>
<b>Student Conduct &amp; Discipline</b>	<b>Section 13</b>
<b>Disciplinary Action</b>	<b>Section 14</b>
<b>Grievance Procedure</b>	<b>Section 15</b>
<b>Infection Control Plan</b>	<b>Section 16</b>
<b>Exposure to Blood Borne Pathogens</b>	<b>Section 17</b>
<b>Responsibilities &amp; Objectives of Instructors</b>	<b>Section 18</b>
<b>Curriculum Policies</b>	<b>Section 19</b>
<b>Evaluations &amp; Counseling</b>	<b>Section 20</b>
<b>Dress Code</b>	<b>Section 21</b>
<b>Smoking/Tobacco Policy</b>	<b>Section 22</b>
<b>Tuition &amp; Refund Policy</b>	<b>Section 23</b>
<b>Academic Assistance</b>	<b>Section 24</b>
<b>Intellectual Property</b>	<b>Section 25</b>
<b>Classroom &amp; Facility Description</b>	<b>Section 26</b>

<b>Leave of Absence/Interruption in Training Policy</b>	<b>Section 27</b>
<b>Conditions for Reentrance after Unsatisfactory Progress/Conduct</b>	<b>Section 28</b>
<b>Student/Employee Records</b>	<b>Section 29</b>
<b>Social Media</b>	<b>Section 30</b>
<b>Advanced Placement Policy</b>	<b>Section 31</b>
<b>Experiential Learning Policy</b>	<b>Section 32</b>
<b>Nurse-to-Paramedic Education Policy</b>	<b>Section 34</b>

# Paramedic Education Program Organizational Chart



## **1. Program Overview**

This Paramedic Program is approved by the Illinois Department of Public Health and is eligible for college credit. Those successfully completing the Morris Hospital & Healthcare Centers Paramedic Education Program will be awarded a Certificate of Completion and 30.5 credit hours at Joliet Junior College. Graduates will be eligible to take the IDPH State Exam and/or the National Registry Paramedic Exam. The program is sponsored by Morris Hospital & Healthcare Centers in partnership with Joliet Junior College and is administered by the Morris Hospital EMS System.

## **2. Accreditation**

### **Morris Hospital Accreditation:**

Morris Hospital is accredited by the Healthcare Facilities Accreditation Program (HFAP)

Healthcare Facilities Accreditation Program (HFAP) is authorized by the Centers for Medicare and Medicaid Services (CMS) to survey all hospitals for compliance with the Medicare Conditions of Participation and Coverage.

### **Paramedic Program Accreditation:**

The Morris Hospital Paramedic Education Program is accredited by the Commission on Accreditation of Allied Health Education Programs ([www.caahep.org](http://www.caahep.org)) upon the recommendation of the Committee on Accreditation of Educational Programs for the Emergency Medical Services Professions (CoAEMSP).

Commission on Accreditation of Allied Health Education Programs

1361 Park Street

Clearwater, FL 33756

727-210-2350

[www.caahep.org](http://www.caahep.org)

To Contact CoAEMSP:

8301 Lakeview Parkway

Suite 111-312

Rowlett, TX 75088

214-703-8445

FAX 214-703-8992

[www.coaemsp.org](http://www.coaemsp.org)

### **Joliet Junior College Accreditation:**

Joliet Junior College is accredited by the Higher Learning Commission of the North Central Association, 30 North LaSalle Street, Suite 2400, Chicago, IL 60602-2504, (312) 263-0456.

Courses and programs are approved through the Illinois Community College Board (ICCB), the Illinois Board of Higher Education (IBHE) and the Illinois Articulation Initiative (IAI) as appropriate.

Additional information, including specialized accreditation, is available in the printed college catalog and at <http://www.jjc.edu/about-jjc/institutional-research-effectiveness>.

## **3. Program Mission Statement**

To graduate competent paramedics through cognitive, affective, and psychomotor demonstrated results.

#### **4. Program Goal**

To prepare competent entry-level Paramedics in the cognitive (knowledge), psychomotor (skills), and affective (behavior) learning domains with or without exit points at the Advanced Emergency Medical Technician and/or Emergency Medical Technician, and/or Emergency Medical Responder levels.

#### **5. Program Objectives**

Cognitive- At the completion of the program, the graduate will demonstrate the ability to comprehend, apply and evaluate the clinical information relative to his/her role as an entry-level paramedic.

Psychomotor- At the completion of the program, the graduate will demonstrate technical proficiency in all skills necessary to perform in the role of an entry-level paramedic.

Affective- At the completion of the program, the graduate will demonstrate personal behaviors consistent with professional and employer expectations for an entry-level paramedic.

#### **6. Discrimination Policy**

The Program adheres to Title VI, Title IX, ADA and Section 504; thus does not discriminate in educational and employment practices on the basis of race, color, national origin, age, sex, sexual orientation, religion, marital status, citizenship, veteran status, disability or handicap.

#### **7. Malpractice Insurance/Medical Insurance**

A student enrolled in the program will be carried by Morris Hospital's liability insurance during the course. This shall not be confused with standard medical insurance. Students are required to obtain their own medical insurance. A copy of the student's current medical insurance card will be kept in the student's file.

#### **8. Physicals, TB Test, Drug Test, Background Check and Immunizations**

Each student must obtain a physical examination, TB test, drug screen, background check, and have proper immunizations. Documentation will be maintained in the student's file.

#### **9. School Closings**

The program will announce any school closings via mass email.

#### **10. Holidays**

Holidays/Breaks will be determined by the Morris Hospital EMS Education Coordinator in accordance with Joliet Junior College's schedule. Holidays/Breaks will be outlined in the course syllabus.

#### **11. Attendance**

##### **Classroom/Lab Attendance**

Students are allowed to miss a total of 28 hours of all class and lab sessions for the duration of the program. Each class/lab will be considered a 4-hour absence regardless of its actual length in time. Coming late or leaving early from any class/lab will be considered tardy and count as a 2-hour absence regardless of the actual time of tardiness or early departure. Students will receive an Absence/Tardy Record for each occurrence. This is a two-part form that the student and instructor will both sign documenting the absence/tardy. One copy is for the student to keep for his/her records and the other will

go in the student's file. The student will be notified in writing by the EMS Education Coordinator on their sixth absence and will be placed on attendance probation. On the student's seventh absence they will once again receive written notification from the EMS Education Coordinator and will also be required to have a meeting with the Medical Director and the EMS Education Coordinator. Should the student receive an eighth absence they will be dismissed from the Program. Some absences will be considered excused. Excused absences are described below.

- **Excused Absences-** An excused absence is an absence that is authorized by the EMS Education Coordinator and will not count against the 28 hours allowed in the program. Students are responsible for all missed content during an excused absence. If the student misses more than 28 hours, they will be required to make up any time over the 28 hours allowed by completing extra work assignments provided by the EMS Education Coordinator. Excused absences will be considered for following:
  - Personal Illness (with documentation)
  - Death within the family
  - Military call to duty

The above reasons for an excused absence shall be considered, but may not be granted. The EMS Education Coordinator may require documented proof of the excused absence. Pre-approved arrangements for the above excused absences must be made prior to the beginning of the class/lab when reasonably possible.

Students are responsible to obtain all material missed during the absence. Due to the nature and content of the program, absences are to the detriment of the student.

### **Class Sign-In Sheet**

For each class/lab there will be a student sign-in sheet located in the classroom. Students are required to sign in and may not sign for other students. If a student fails to sign the sheet it may be considered an unexcused absence regardless of the student's actual attendance of the class.

### **Clinical/Field Time Attendance**

Students are required to attend clinical and field time throughout the program. Students shall schedule these experiences utilizing a computer based program called FISDAP. Students must schedule the clinical or field time in FISDAP 7 days prior to its start date and time. Students will be allowed to drop the clinical or field time or make changes up to 14 days prior to the clinical or field time start date or time. If the student fails to attend or drops a clinical or field time rotation inside the 14 day window it will count as a 4-hour unexcused absence and be deducted from the 28 hours allowed in the program. Excused absences will be allowed according to the policy of this handbook. Tardiness or early departure from clinical and field time rotations will also be handled in the same manner as discussed in this handbook. If the student fails to complete the proper documentation for the clinical or field experience, the clinical or field time will not count and the student will need to reschedule the time.

### **Call Off Procedures**

If a student will be absent from class/lab/clinical/field time they shall use the below call off procedures to properly document their absence. Failure to follow the call off procedures may result in disciplinary action including dismissal from the program.



- **Classroom Call Off-** Contact the instructor prior to the start of the class via telephone. The student will give the reason of his/her absence and the date and length of time the absence will occur. If the student cannot make contact with the instructor, they may leave a voicemail with the above information. Calling off is not to be confused with excused absences. Students are required to call off for all absences from the program however not all absences will be considered excused and will count towards the 28 hours allowed.
- **Clinical Call Off-** If the student will be absent from a clinical/ride time they shall contact Stephanie Ressler or Ed Ludwig and also contact the clinical site prior to the start of the clinical/ride time. This shall be done via telephone. If the student cannot make contact with the Stephanie Ressler or Ed Ludwig, they may leave a voicemail with the reason they will be absent, the clinical area, and the date and time scheduled. This is not to be confused with excused absences. Students are required to call off for all absences in the program however not all absences are excused and will count towards the 28 hours allowed. *Remember this procedure only needs to be followed if the clinical is in the 14 day window. If it is outside the 14 day window the student may drop the clinical via FISDAP.*

## **12. Voluntary Withdrawal**

A student wishing to withdraw from the program must submit a written resignation to the EMS Education Coordinator and include his or her reason for leaving. There will be no refund of tuition after the last business day before the start of the course section, except under unusual circumstances. Students have a right to contact Joliet Junior College Registrar to petition for a refund:

<http://www.jjc.edu/registration/pages/refund-policy.aspx>. Refund dates will be listed on the JJC student registration notification. The student must also contact JJC registration office to be dropped from the course (to avoid receiving a failing grade if it is before the last day to withdraw listed on the student registration notice).

## **13. Student Conduct & Discipline**

### **Student Conduct**

Program policies assure professionalism within the personnel and the program. Any infraction that may be detrimental to the welfare or reputation of an individual or the program will not be tolerated and are subject to disciplinary procedures. Students are bound to the JJC Student Code of Conduct and Academic Honor Code- <http://www.jjc.edu/academic-behavior-standards/pages/default.aspx>.

### **Disciplinary Procedures**

The following are the Paramedic Program disciplinary procedures:

### **Didactic**

A list of those incidents that may warrant disciplinary action in relation to the didactic phase include, but are not limited to the following:

- Failure to adhere to the attendance policy
- Excessive excused absences
- Destruction of property

- Leaving without permission
- Carelessness of program property
- Dishonesty, cheating, plagiarism, and forgery
- Foul language or abusive behavior
- Failure to comply with program policies/procedures
- Poor personal appearance
- Sleeping in class
- Tardiness
- Being under the influence or in possession of alcohol/drugs
- Firearms possession or dangerous weapons
- Sexual harassment/ Title IX violations
- HIPAA violations
- Social Media Violations

### **Clinical**

A list of those incidents which may warrant disciplinary action in relation to the clinical phase include, but are not limited to the following:

- Unexcused clinical absence
- Sleeping in clinical area
- Lack of interest/participation
- Tardiness
- Poor personal appearance
- Destruction of property
- Inability to comply with clinical objectives
- Leaving without permission
- Improper uniform
- Dishonesty
- Carelessness
- Violation of safety rules or practices
- Lack of cooperation with personnel
- Failure to comply with clinical program policies/procedures
- Foul language or abusive behavior
- Possession or being under the influence of alcohol/drugs
- Horseplay
- Performance of unauthorized skills
- Forgery
- Sexual Harassment/Title IX violations
- Possession of firearms or dangerous weapons
- Social Media Violations

*Depending on the severity of the incident, as determined by the EMS Education Coordinator, any violation listed above may result in dismissal from the program.*

## **14. Disciplinary Action**

### **Probation**

Probation may be enacted as a disciplinary action if a student displays an unsatisfactory attitude, conduct, clinical, classroom, or academic performance. During probation, remedial measures for improvement must be completed as outlined by the EMS Education Coordinator. Any failure to comply with probationary measures may result in the student being dismissed from the program. Students on probation will be reevaluated on a weekly basis. Additional assignments may be given depending on the areas of weakness. The student will remain on probation until the Education Coordinator determines that the student has satisfactorily met the conditions of probation.

### **Dismissal**

The EMS Education Coordinator reserves the right to dismiss any student whose academic standing, clinical performance, attitude, or conduct does not meet program requirements. The dismissal of a student's participation may also become necessary if the student's personal health issues cause attendance problems or cause potential risk to patients, other students, or faculty.

## **15. Grievance Procedures**

### **Student Grievance Procedures**

#### **Student Rights**

The student has the right to receive full and fair consideration of problems that cannot be settled through the normal channels between the EMS Education Coordinator and the student. This procedure will be used when differences arise between a student and the program faculty as to the interpretation or application of any of the provisions of the program's policies, rules, and regulations. An earnest effort to resolve the matter fairly and promptly will be made in a manner outlined below. Any student may utilize this procedure without prejudice of any kind. This procedure allows a student to obtain a full and impartial hearing of problems and concerns and applies to both didactic and clinical portions of the program. Unless notified by the EMS Education Coordinator, the student involved will maintain academic rights and standings pending the outcome of any decision under this policy. The student also has the right to file a formal academic complaint or a final grade appeal at JJC according to JJC's policy and procedures upon completion of the paramedic program grievance procedure.

#### **Initial Concerns**

Students may discuss questions, concerns, suggestions, or problems with the instructor involved. The instructor will make every effort to deal with the complaint/problem in a professional manner and in compliance with program policies and procedures. The instructor shall be available within three (3) working days of a request by a student for a meeting and will give a verbal answer to the student within two (2) working days after the meeting.

#### **Appeal to Medical Director / EMS Education Coordinator**

If dissatisfied with the instructor's verbal response, the student may submit the matter in writing to (a) the Medical Director if the issue concerns a patient care problem (either real or perceived) which could

cause harm to the patient or (b) to the EMS Education Coordinator if the issue concerns an academic problem. A meeting with the student will be called with five (5) working days after receipt of the complaint. The student will receive a written decision within two (2) working days after meeting with the student.

### **Appeal to Paramedic Program Grievance Committee**

The decision of the Medical Director or EMS Education Coordinator is final. However, decisions involving dismissal from the program may be appealed. The student may request that a Paramedic Program Grievance Committee be convened to hear the student's complaint. This request must be made in writing to the EMS Education Coordinator within five (5) days of receipt of the written decision of the Medical Director or EMS Education Coordinator. The Paramedic Advisory Board will then appoint a non-partial Grievance Committee consisting of: one student, one JJC program representative, one community EMS Administrator, a member of the Paramedic Program staff, and two members of the Paramedic Program Advisory Board. The EMS Education Coordinator will notify the EMS Manager of the request for a Grievance Committee hearing. The Morris Hospital Vice President of Professional Services will serve as the presiding officer for the appeal hearing.

### **The Hearing**

The EMS Education Coordinator will send the student notice of the hearing; including the date, time, and place by certified mail, with a return receipt requested. The Grievance Committee will meet and hear both the student's and the program's position. The EMS Education Coordinator or the Medical Director will present the Program's position. The student shall not be represented by an attorney during this proceeding.

The presiding officer shall act to insure that all participants in the hearing have a reasonable opportunity to present their respective positions, assure that order is maintained, and that no intimidation is permitted. He or she will determine the order of procedure throughout the hearing and will make rulings regarding procedure and the admissibility of evidence. *The hearing will NOT be construed as a legal proceeding, but internal to the Paramedic Program.*

In all cases in which a hearing is conducted under this procedure, after all positions have been presented by both sides, the Grievance Committee may overturn the decision of the Medical Director or EMS Education Coordinator only if it finds the student has proven that the disciplinary action being appealed was unreasonable, not supported by the evidence, or otherwise unfounded. The Grievance Committee will have ten (10) working days to reach a decision following the hearing. The presiding officer will meet with the Grievance Committee during that ten (10) day period to discuss the case. The presiding officer shall serve as a resource person to the Grievance Committee but will not participate in any voting.

### **The Decision**

Upon reaching a decision, the Grievance Committee will document its decision to writing. The presiding officer will meet with the student and the EMS Education Coordinator to advise them of the Grievance Committee's decision and the rationale behind that decision. Additional, but separate action may be taken as outlined by JJC policies: <http://www.jjc.edu/academic-behavior-standards/pages/default.aspx>.

## **Faculty Grievance Procedures**

Faculty grievance procedure will follow the Morris Hospital grievance policy located in iShare and the Hospital Administration Manual (HAM).

### **16. Infection Control Plan**

Universal precautions are mandatory for students to don prior to caring for any patient. Gloves must be worn when touching blood and body fluids, mucous membranes, or non-intact skin; handling items or surfaces soiled with blood or body fluids; and performing venipuncture or other vascular access procedures. After contact with each patient, gloves should be changed and disposed of properly. To prevent exposure to mucous membranes of the mouth, nose and eyes, masks and protective eye wear or protective face shields should be worn during procedures that are likely to generate droplets of blood or body fluids. Gowns or aprons should be worn during any procedure likely to generate splashes of blood or body fluids.

To prevent needle stick injuries, needles *should not* be recapped, purposely bent, broken, removed from disposable syringes, or otherwise manipulated by hand. After they are used, disposable syringes and needles, scalpel blades and other sharp items should be placed in biohazard puncture-resistant containers for disposal.

*NEEDLES ARE NOT TO BE INSERTED INTO STRETCHER MATTRESSES OR BENCHES EITHER IN THE HOSPITAL OR IN AN AMBULANCE!!*

A student who has exudative or weeping skin lesions should refrain from direct patient care and from handling patient care equipment until the condition resolves.

#### **Hand washing**

Hand washing shall be performed after each patient contact. All jewelry should be removed and all surfaces of the hand lathered with an antimicrobial soap for at least 20 seconds. If water is unavailable, an alcohol-based scrub should be used. Hospital policies and Fire/EMS policies shall be followed at all times during rotations.

### **17. Exposure to Blood Borne Pathogens**

Students are at risk for exposure to blood borne pathogens during skills sessions and clinical/field rotations. In the event that the student experiences a blood borne pathogen exposure, students shall follow the exposure control plan of the clinical/field area that they are attending. Students shall notify their preceptor who will assist in the steps of the specific exposure control plan. Students will be responsible for all medical costs associated with the treatment of the exposure. Students are required to notify the EMS Education Coordinator that an exposure has occurred immediately following initial treatment of the exposure.

### **18. Responsibilities and Objectives of the Instructors**

- Conduct the program in compliance with the Paramedic Program policies and procedures.
- Conduct the program according to D.O.T., IDPH, and CAAHEP standards.

- Provide an environment, both classroom and clinical, that is conducive for the development of the student's skills and abilities.
- Develop and implement the program's curriculum, define course outlines, and evaluate the educational objectives.
- Provide access to and encourage utilization of the library facilities and other ancillary teaching aids.
- Develop and maintain school files and student records to aid in the evaluation of the students' progress, the curriculum, and the need for change within the program.
- Structure and organize lab, field and clinical experiences.
- Provide the students with copies of Paramedic Program policies and procedures.
- Provide the students with frequent evaluations of their progress and performance.
- Provide student counseling, guidance, and tutoring as needed/requested.
- Inspire the student to recognize and display cooperative attitudes and appreciation of the need for continued education in the field of Emergency Medical Services and personal development as a member of the community.
- Demonstrate the professional attitudes and behavior required of educators.
- Comply with the requirements of the Federal Education Rights and Privacy Act (FERPA).

## **19. Curriculum Policies**

### **Program Confidentiality**

Every student enrolled in the program shall maintain the confidentiality of the program. This includes, but is not limited to, confidentiality concerning administrative personnel of any clinical affiliate, clinical preceptors, Medical Director, EMS Education Coordinator, instructors, fellow students, patients encountered during clinical rotations, and subject matter presented during the didactic or clinical sessions. Violations of program or HIPAA confidentiality may result in dismissal from the program.

### **Examinations/Grades**

Students are required to complete all classroom, lab, and clinical goals to successfully complete the program. Students are responsible for all materials covered in the textbook, as well as lecture information.

### **Trimester Breakdown**

- 1<sup>st</sup> Trimester
  - Module 1
    - Preparatory, Well Being, Legal Aspects, Communication & Documentation
  - Module 2
    - Patient Assessment
  - Module 3
    - Airway Anatomy, Physiology, and Management
- 2<sup>nd</sup> Trimester
  - Module 4
    - Pharmacology, Medical Math, Medication Administration Procedures and Skills, Intravenous and Intraosseous Procedures/Skills, Shock and Resuscitation

- Module 5
  - Cardiovascular Emergencies, Procedures, and Skills, ECG Interpretations and Treatment
- Module 6
  - Medical Emergencies and Treatment
- 3<sup>rd</sup> Trimester
  - Module 7
    - OB/GYN, Neonatal, Pediatric, Geriatric, and Special Population Emergencies and Treatment
  - Module 8
    - Traumatic Emergencies and Treatment
  - Module 9
    - EMS Operations
- Final Exam

### **Academic Progress & Evaluation**

Students are evaluated for attendance and grades at the end of each trimester until program completion. The minimum grade average required, for theory and lab combined, is an overall 80%.

### **Student Grading**

- Module Exams & Final Exam require a minimum passing grade of 80%
- Exams are worth 80% of overall grade and all other assignments together are worth 20% of overall grade.
- Lab Skills Evaluations are Pass/Fail.

### **Grading Scale**

- 93% or Above = A
- 86% to Below 93% = B
- 80% to Below 86% = C
- Below 80% = F

### **Overall Grade**

Students are expected to maintain an overall grade average above 80% throughout the program. Failure to maintain an overall grade average at or above 80% at the end of each trimester will result in dismissal from the program.

### **Module Exams**

Students are required to take module exams at the end of each module. The minimum passing score for any Module Exam is 80%. Failure to take the Module Exam on the dates assigned, without prior notification to the instructor, will result in a score of zero (0). The EMS Education Coordinator will notify the student of a new test date at the discretion of the program.

### **Module Exam Retest**

Should a student achieve less than an 80% on a Module Exam, they must retest the Module Exam within 1 week. The maximum achievable grade on a retest is 80%. Students will be allowed 1 retest on Module Exams. Failure to retest a Module Exam or achieve a grade of 80% will result in the student being placed

on Academic Probation. Students will remain on Academic Probation indefinitely. If the student fails a second exam while on Academic Probation, they will be dismissed from the program.

### **Final Exam**

Students will be required to pass a final exam at the end of the program. Students must achieve a minimum of 80% on the final exam. To be eligible to sit for the Final Exam students must have successfully passed all Lab Skills Evaluations and completed all Clinical Requirements. If the student scores below 80% on the final exam, they will fail the program regardless of their overall grade and be ineligible to sit for the licensing examination.

### **Major Exam Review for Validity & Reliability**

Each question is tied to a chapter objective.

Questions are selected to assure critical thinking. Simple definition questions are avoided.

Questions are selected based upon long-term analysis of areas of knowledge that students struggled with (patterns over several years with quizzes, tests, and practical skill sessions).

Item analysis is completed for every major exam and shared with instructor(s), Lead Instructor, Program Director, and Medical Director. This analysis includes analysis of individual questions, the class average, and individual grades. For questions that greater than 70% answering incorrectly, the following analysis is completed:

- Is the answer to the question on the ppt lecture and in the book: highlight area for re-instruction as needed.
- Have additional instructor(s), Lead Instructor, Program Director, and Medical Director look at the question; obtain and apply feedback.
- Is the question clear: reconstruct question as needed and have additional instructor(s), Lead Instructor, Program Director, and Medical Director review the question before adopting the new question

### **Quizzes**

Class quizzes consist of medical terminology quizzes, scheduled quizzes and pop quizzes. Quizzes may not be made up or retested. If a student is absent or unable to take a quiz, a zero grade will be given.

### **Homework**

Homework is at the discretion of the class instructor and will be counted as a quiz grade.

### **Lab Teaching**

Students will be instructed on each skill required by National Education Standards, The National Registry, Illinois Department of Public Health, and the Paramedic Education Program. Students will practice each skill with instructors until the student demonstrates competency.

### **Lab Exams**

Students will be evaluated as to their technique, safety, and proficiency with each skill as outlined on the NREMT skills testing sheets. The instructor for each tested skill will complete the NREMT skills evaluation form. Skills are evaluated on a pass/fail basis with the fail criteria outlined. Students who fail



a skill evaluation will be given the opportunity to remediate. The EMS Education Coordinator will schedule remediation. After remediation, the student will be retested on the skill. If the student fails the retest they shall be dismissed from the program.

### Specialty Courses

Students will be required to attend and successfully complete the below specialty certification courses. Failure to complete these courses during the program may result in the student failing the course and ineligibility to take the licensing exam.

- Advanced Cardiac Life Support, AHA
- Pediatric Advanced Life Support, AHA
- Pre-Hospital Trauma Life Support, NAEMT

### Licensing Examination

Only students who successfully graduate the program will be eligible to sit for the Illinois Department of Public Health and/or the NREMT Paramedic Licensing Exam.

### Goal & Hour Requirements

Didactic Component		Hours	
General Lecture/Lab/Exams		381	
Field Internship Component		Hours	
Field Experience & Internship		360	
Clinical Component		Hours	
Emergency Department		200	
Respiratory Department		24	
Immediate Care Center		48	
Cardio Diagnostics		16	
Pediatrics		8	
PMD Time		6	
Total Program Hours		1043	
Paramedic Graduation Goal Requirements			
Ages	Required	Impressions	Required
New Born (< 1 month)	2	Cardiac Arrest	2
Infant (< 1 year)	2	Trauma	20
Toddler (< 4 years)	2	Respiratory	20
Preschooler (< 6 years)	2	Cardiac	20
School-Age (< 13 years)	2	Medical	20
Adolescent (< 18 years)	2	Obstetrics -1 Live Vaginal Birth	2
Pediatric (< 18 years)	30	Abdominal Pain	10
Adult (< 65 years)	30	Psychiatric	10
Geriatric (> 65 years)	30	CVA	2
Complaints	Required	Skills & Interventions	Required
Breathing Problem	10	IV's	30
Abdominal Pain	10	Medications	50
Altered Mental Status	10	Ventilations	20
Chest Pain	10	ET Tube Insertion	20
Pediatric Respiratory	5	Airway Management	50
Weakness / Dizziness	10 / 10		
Field Team Leads/Calls	Required	Specialty Courses	Required
Field ALS Calls	15	ACLS	Pass
Field ALS Team Leads	10	PALS	Pass
Simulated ALS Team Leads	10	PHTLS	Pass

Total Calls	35		

### **Clinical Experience- Hospital Setting**

Clinical education represents a major component of paramedic education since this is where the student learns to synthesize cognitive and psychomotor skills. The ability to serve in the capacity of an entry-level paramedic requires experience with actual patients. This process enables the student to build a database of patient experiences that serves to help in clinical decision making and pattern recognition.

### **Didactic Experience- Classroom Setting**

The program is currently utilizing the U.S. Department of Transportation's National Curriculum as required by the Illinois Department of Public Health.

Each student is required to complete a minimum number of the hours to successfully complete the didactic portion of the program. The student must maintain an overall grade of 80% or above at the end of each trimester to successfully complete the program. The student must also successfully pass a final written exam with a minimum of 80% to successfully complete the program.

Students may be required to participate in certain community events during the duration of the program such as disaster drills or other EMS community events that will enhance knowledge and contribute to the community. These events may be required for successful completion of the program. These events will be assigned and scheduled per the EMS Education Coordinator.

### **Field Experience & Field Internship**

Students will be assigned an approved ALS agency to complete the field experience & internship. Hours will be scheduled through FISDAP with prearranged dates and times that have been agreed upon with the agency and the EMS Education Coordinator. Field experience & internship must be under the supervision of a licensed paramedic who meets the program requirements of being a preceptor. Chosen preceptors for each agency will be agreed upon between the agency's EMS Coordinator and the EMS Education Coordinator.

The EMS Education Coordinator and the individual agency have the right to refuse the student to attend field experience & internship at specific agencies. This is generally done at the agency's request.

It is understood that some students may be attending field experience & internship at approved agencies that they are employed with, but these must still be scheduled through FISDAP. If it is not scheduled through FISDAP it will not count towards the student's field experience & internship hours and goals. The student must also be the third person on the ambulance. They cannot be acting as an EMT-B but must be acting as a paramedic student of the program. If these above requirements are met, then the student can be credited while on duty.

During the field experience & internship the student must be evaluated on 35 ALS calls. Out of the 35 ALS calls required, 10 of the calls must be during the field internship phase while the student is acting as the Team Leader. A Team Lead is considered when the student takes control of the call under the supervision of the preceptor and effectively manages the call from start to finish with very little, if any, input or assistance from the preceptor. Team Leads are designed to see if the student has the ability to

effectively manage and perform as a paramedic without assistance. The preceptor will evaluate the student on all calls and determine if the student will receive credit for a Team Lead.

### **Field Experience Phase Defined- (ALS Team Member)**

The field experience phase is designed to prepare the student for becoming a paramedic on an ALS ambulance and to focus on individual paramedic skill sets. During the field experience phase the student shall perform and be evaluated on all skills and interventions taught in class and on how to become an effective ALS team member. The goal is to ready the paramedic student for field internship where they will be evaluated as the Team Leader on ALS calls.

### **Field Internship Phase Defined- (ALS Team Leader)**

The field internship phase is designed to evaluate the student as a paramedic intern. This is the final phase of the field experience and is the opportunity for the intern to work as the paramedic on an ALS ambulance. The paramedic preceptor will evaluate the intern on their effective call management, patient assessment, documentation and their ability to coordinate the treatment and transportation of their patients. The intern will also be evaluated on their communication, prioritization, and delegation of duties to other crew members. During the internship the intern must successfully complete 10 ALS Team Leads.

### **ALS Call Defined**

An ALS call will be defined as any call where a medication other than oxygen was administered or when both ECG Monitoring and an IV (attempt) was made.

Field experience & internship affords the student the opportunity to correlate didactic knowledge with actual “hands on” clinical application. The focus should be to strengthen basic skills under the auspices of an ALS preceptor. The student should be encouraged to be an involved team member rather than merely an observer. This includes any daily functions or duties that are performed around the agencies facility. The student should work alongside the crew and help out where needed. The student is also expected to bring study materials and to study when there is down time.

The student is expected to follow all policies, procedures, regulations, and rules that the agency may have set in place. Failure to follow these rules will result in disciplinary action taken against the student. Agencies are under no obligation to continue their hospitality if problems arise with a student rider.

### **Ride Time Student Objectives:**

- Demonstrate the proper use of ALS vehicle and equipment.
- Observe and discuss the Paramedic’s roles and functions as a pre-hospital provider.
- Participate in ALS and BLS care as a functioning team member and team leader under the auspices of a system approved paramedic preceptor.
- Observe and discuss completed telemetry runs in order to develop an understanding of the EMS field personnel’s responsibility (run report completion, patient assessment, management and communications).
- Demonstrate knowledge of system SMO’s, Policies and Procedures as they relate to the agency.
- Participate in the daily chores of the agency and honor any rules or expectations.

## **20. Evaluations & Counseling**

Evaluation and counseling may occur at any time during the program as deemed necessary by the student, instructors or EMS Education Coordinator. The EMS Education Coordinator and instructors are available for counseling as requested. JJC has licensed counselors on staff that can be utilized by students on walk-in basis during normal hours.

## **21. Dress Code**

A dress code will be required for all students. Adherence to the dress code is the student's responsibility. Failure to follow dress code policy will result in disciplinary action taken against the student. The dress code is there for the student's safety and professional appearance.

### **Personal Appearance**

Students will be required to maintain proper hygiene and a neat appearance throughout the program. Students shall cover all visible tattoos. No ear gauges. No jewelry other than a simple wedding band and females may have one visible piercing per ear and must be a stud type earring (no dangling earrings). Males may not have visible piercings. No facial hair other than a trimmed mustache and males must have hair cut above the collar and females must have hair below chin length pulled back in a ponytail.

### **Uniform Defined**

A student uniform will consist of a polo-style shirt (purchased at JJC Bookstore), navy blue t-shirt worn under polo shirt, navy blue duty pants, black duty boots, black duty belt, watch with second hand, student ID badge and a stethoscope. Uniforms shall be cleaned and pressed and the shirt shall be worn tucked into pants. Uniforms will be required during all classes, labs, clinical and field time. Failure to wear the proper uniform will result in the student not being allowed to attend clinical or classroom activities (and the student will receive an unexcused absence).

### **ID Badges**

ID badges shall be worn by all students while attending clinical, field, and classroom activities. Failure to wear the proper Morris Hospital ID Badge will result in the student being required to leave the classroom, lab, field or clinical area and the student will receive an unexcused absence. Lost or stolen ID badges must be reported to the EMS Education Coordinator immediately and will be replaced at the student's expense. ID badges must be returned on the last day of class after the final exam.

## **22. Smoking/Tobacco Policy**

Tobacco use by employees, students, volunteers, medical staff, patients and visitors anywhere on the hospital or college campus, which includes all buildings, grounds and vehicles owned or operated by the hospital or college is prohibited. This includes inside personal vehicles on hospital campus grounds. If a student wishes to use tobacco while attending class or clinical time they will need to leave hospital grounds to use the tobacco during designated breaks. JJC allows smoking only inside the individual's vehicle. Tobacco use on a non-Morris Hospital Campus is set by the policy of that institution. Students are expected to familiarize themselves with specific regulations and policies and comply accordingly. Any student that violates the tobacco use policy or any other institutions policy while performing in the

capacity of a student of this program will be subject to discipline which may result in dismissal from the program.

### **23. Tuition**

Tuition will be determined by the current JJC tuition rate (<http://www.jjc.edu/accounts-payments/pages/tuition.aspx>) and will be divided into 3 semesters as follows:

- Fall Semester EMS 215- 7.5 credits + course fees
- Spring Semester EMS 216 & 218- 12.5 credits + course fees
- Summer Semester EMS 217 & 219- 10.5 credits + course fees

*No tuition refunds will be made beyond the last business day before the start of the semester.*

### **24. Academic Assistance**

Assistance may be arranged with the EMS Education Coordinator during office hours or by special appointment. Students with a documented disability for which special arrangements or accommodations may be needed should contact the EMS Education Coordinator at their earliest convenience to discuss how their educational needs can best be met.

#### **JJC Student Support- <http://jjc.edu/services-for-students/pages/default.aspx>**

- Disability Services: <http://jjc.edu/services-for-students/disability-services/pages/default.aspx>
  - Student Accommodations and Resources (StAR): *If you need disability-related accommodations, specialized tutoring, or assistive technology in this class, if you have emergency medical information you wish to share with me, or if you need special arrangements in case the building must be evacuated, please inform me immediately. Please see me privately after class or at my office.* New students should request accommodations and support by scheduling an appointment with the Student Accommodations and Resources (StAR) Office, Campus Center 1125, (815) 280-2230.
- Tutoring: <http://www.jjc.edu/services-for-students>
- Counseling and Advising: [cclark@jjc.edu](mailto:cclark@jjc.edu)
- Academic Resources: <http://www.jjc.edu/services-for-students/academic-resources>
- Support Programs: <http://www.jjc.edu/services-for-students/support-programs-services>
- Technology Support: <http://www.jjc.edu/services-for-students/pages/technology-support.aspx>

### **25. Intellectual Property**

Students own and hold the copyright to original work they produce in class. It is widely accepted practice to use student work as part of the college's internal self-evaluation, assessment procedures, or other efforts to improve teaching and learning and in promoting programs and recruiting new students. If you do not wish your work to be used in this manner, please inform the instructor.

### **26. Classroom & Facility Description**

The Paramedic Program will be held in the dedicated EMS classroom located at JJC Main Campus: 1215 Houbolt Road, Joliet, IL 60431. This smart classroom comfortably sits 36 students, has dedicated skills rooms attached and has an apparatus bay with a dedicated ambulance adjacent.

### **27. Leave of Absence/Interruption in Training Policy**

Because of the high-paced demand of the program, NO Leave of Absences or Interruption of Training will be granted/allowed. Students must complete the program in its entirety to receive a Certificate of Completion. If a student is dismissed or leaves the program they will not be allowed back in the current program. The student will be required to reapply for a future program.

## **28. Conditions for Reentrance after Unsatisfactory Progress/Conduct**

Students who are dismissed because of unsatisfactory progress, conduct, grades, excessive absenteeism or due to excessive military leave/deployment will be allowed to reapply to the program during the next application period. Students who left the program because of the above reasons will not receive any previous credit for previous modules completed in the program. The student will be required to start the program over.

## **29. Student/Employee Records**

Student/Employee records and transcripts are maintained by the Morris Hospital & Healthcare Centers Paramedic Education Program. Student records are maintained in compliance with the Family Educational Rights and Privacy Act of 1974 (FERPA) and its amendments. Records are maintained and available for 7 years. Records are available to students by calling or writing:

*Morris Hospital & Healthcare Centers  
Attn: Paramedic Education Program  
150 W. High Street  
Morris, IL 60450  
(815) 705-7180*

## **30. Social Media**

The following are guidelines for Morris Hospital Paramedic Students who participate in social media. Social media includes but is not limited to: personal blogs and other websites, including Facebook, Instagram, Snapchat, LinkedIn, Twitter, YouTube or others. These guidelines apply whether students are posting to their own sites or commenting on other sites:

1. Follow all applicable program policies. For example, you must not share confidential or proprietary information about Morris Hospital, the paramedic program, or its participating agencies and you must AT ALL TIMES maintain patient privacy.
2. If you identify your affiliation as a Morris Hospital Paramedic Student, your social media activities should be consistent with Morris Hospital's high standards of professional conduct. Please note: your social media pages can and will be monitored throughout the duration of your time as a student with the Morris Hospital Paramedic Program.
3. Be professional, use good judgment and be accurate and honest in your communications; errors, omissions or unprofessional language or behavior reflect poorly on the hospital and program, and may result in disciplinary action for you. Be respectful and professional to fellow students, participating agencies, affiliates, and patients.
4. Ensure that your social media activity does not interfere with your student commitments.
5. Morris Hospital strongly discourages "friending" of patients or staff on social media websites.
6. Morris Hospital discourages staff from initiating "friend" requests with students.
7. Any violation or perceived violation will be handled on an individual basis by the EMS Education Coordinator, Program Director, and Impacted Parties and will be subject to disciplinary procedures.

**31. Advanced Placement Policy**

The Morris Hospital Paramedic Program does not offer or accept any advanced placement into the program.

**32. Experiential Learning Policy**

The Morris Hospital Paramedic Program does not offer or accept any credit towards experience for advanced placement in the program.

**33. Nurse-to-Paramedic Education Policy**

At this time the Morris Hospital Paramedic Program does not offer a Nurse-to-Paramedic education option.

**34. Handbook Disclaimer**

It goes without saying that there may times where student issues and concerns may arise that are not covered within this handbook. For this reason the below statements will be utilized:

- This handbook may be revised by the EMS Education Coordinator at any time for any reason. If the handbook is revised, notice shall be given to the students and faculty of the revisions made.
- If at any time an issue, situation, discrepancy, concern, or problem arises during the duration of the program and it is not addressed in this handbook, then the EMS Education Coordinator, in consultation with JJC representatives, shall have the final authority to act on the issue, situation, discrepancy, concern, or problem utilizing their best judgment and discretion.